

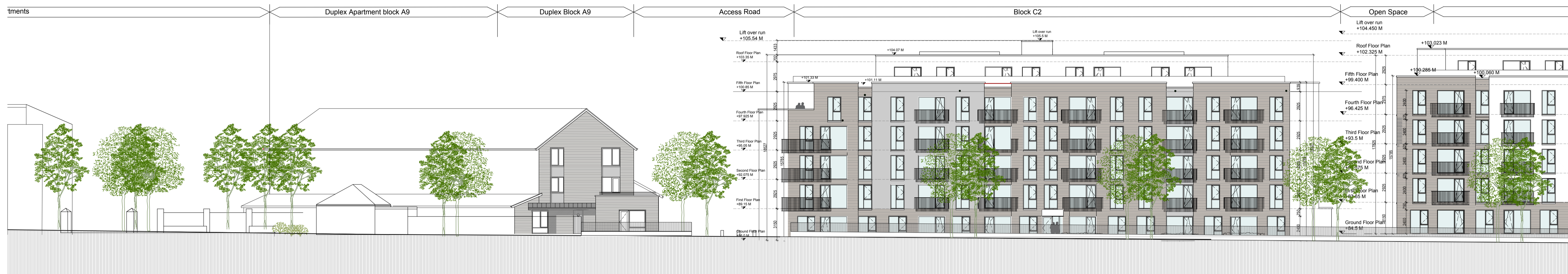


SCHOLARSTOWN ROAD ELEVATION G-G 1:500

**GENERAL NOTES**

1. COPYRIGHT RESERVED
2. DO NOT SCALE DRAWING USE FIGURED DIMENSIONS ONLY
3. ALL DISCREPANCIES TO BE REPORTED TO ARCHITECT
4. THE CONTRACTOR IS RESPONSIBLE FOR CHECKING ALL LEVELS AND DIMENSIONS
5. ALL STRUCTURE TO BE TO STRUCTURAL ENGINEERS DETAILS
6. ALL MECH & ELEC SERVICES TO SERVICES ENGINEERS DETAILS
7. ALL PROPOSED ITEMS TO BE INSTALLED IN ACCORDANCE WITH MANUFACTURERS INSTRUCTIONS
8. CONTRACTOR IS RESPONSIBLE FOR THE COORDINATION OF STRUCTURE PROGRESS AND SERVICES

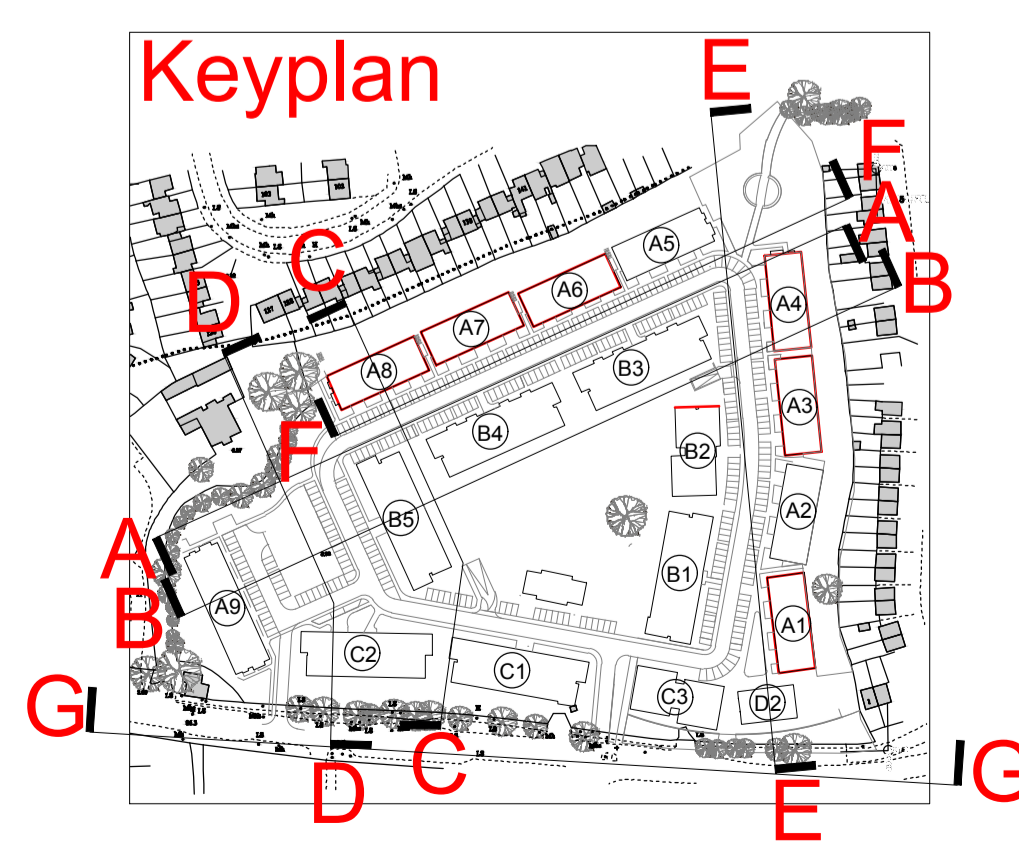
REV	DATE	DESCRIPTION	BY



SCHOLARSTOWN ROAD ELEVATION G-G 1:200



SCHOLARSTOWN ROAD ELEVATION G-G 1:200



**JOHN FLEMING ARCHITECTS**  
 103 LEESON STREET UPPER, DUBLIN 4.  
 T: (01) 6688888 E: info@jfa.ie W: www.jfa.ie

CLIENT  
 Ardstone Homes Ltd

PROJECT  
 Residential Development  
 at Scholarstown Road

DRAWING  
 Site Context Elevations G-G

SCALE  
 Varies - as indicated

JOB NO.  
 1823

DRAWN BY  
 BD

DATE  
 November 2019

DRAWING NUMBER  
 P-S-9-007

REVISION

DRAWING LOCATION  
 \\118.pdm\1823\p\p\p\1 planning application\1823.12.rvt

DRAWING STATUS  
 PLANNING